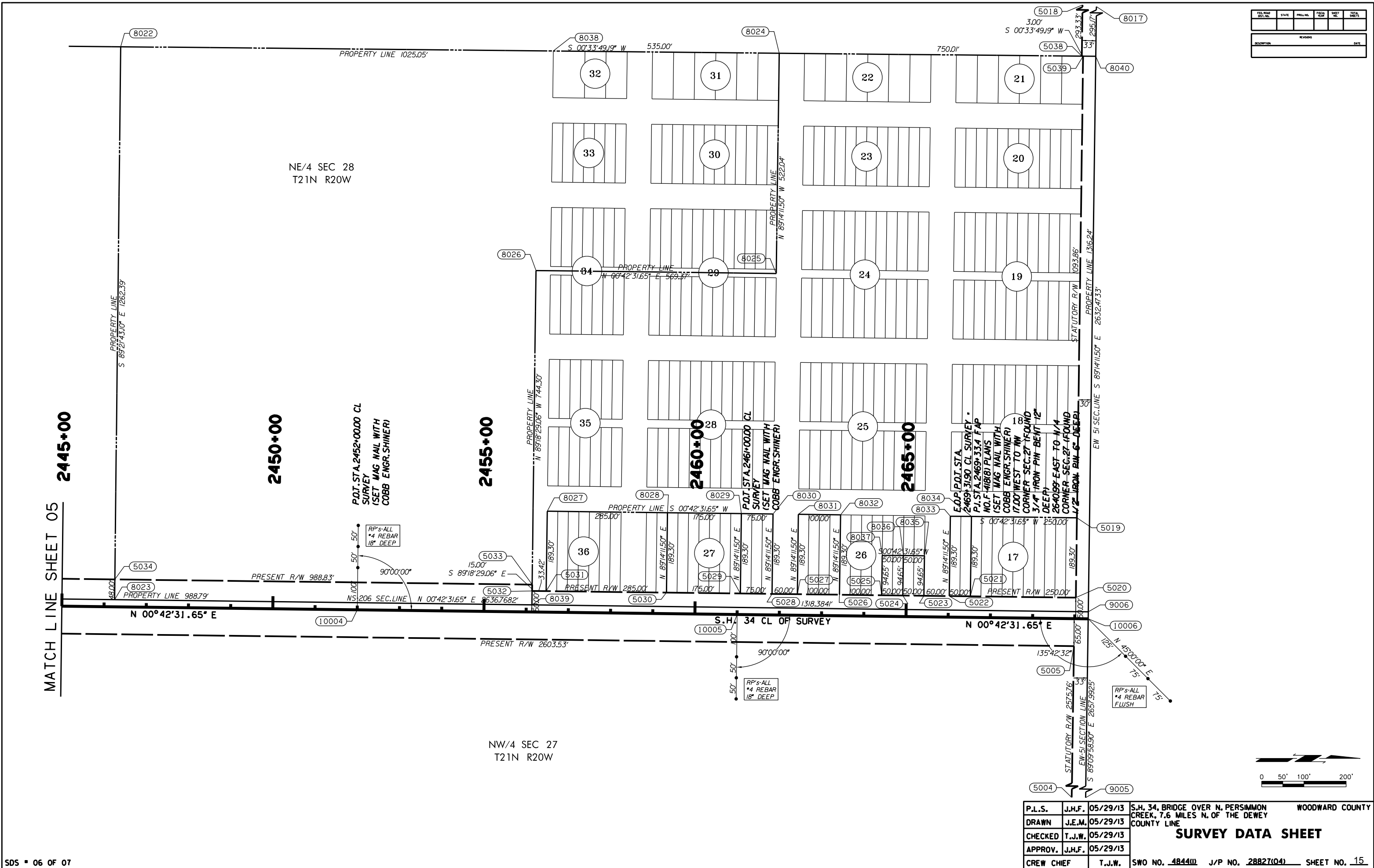


REV. NO.	DATE	DESCRIPTION



P.L.S.	J.H.F.	05/29/13	S.H. 34, BRIDGE OVER N. PERSIMMON CREEK, 7.6 MILES N. OF THE DEWEY COUNTY LINE	WOODWARD COUNTY
DRAWN	J.E.M.	05/29/13	SURVEY DATA SHEET	
CHECKED	T.J.W.	05/29/13		
APPROV.	J.H.F.	05/29/13		
CREW CHIEF	T.J.W.			
SWO NO. <u>4844W</u> J/P NO. <u>28827(04)</u> SHEET NO. <u>15</u>				